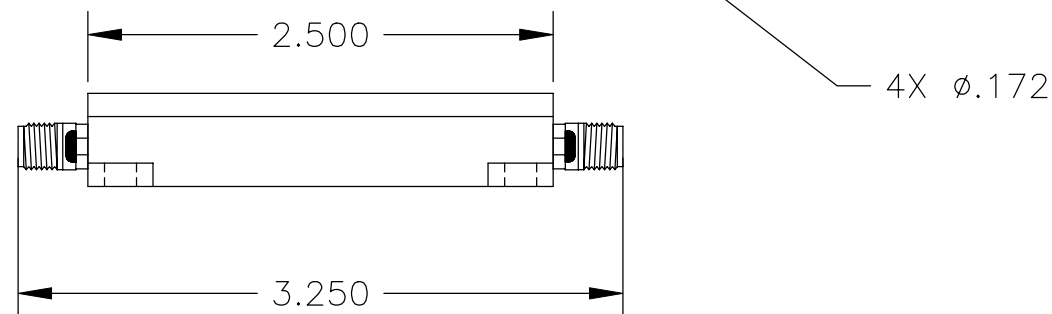
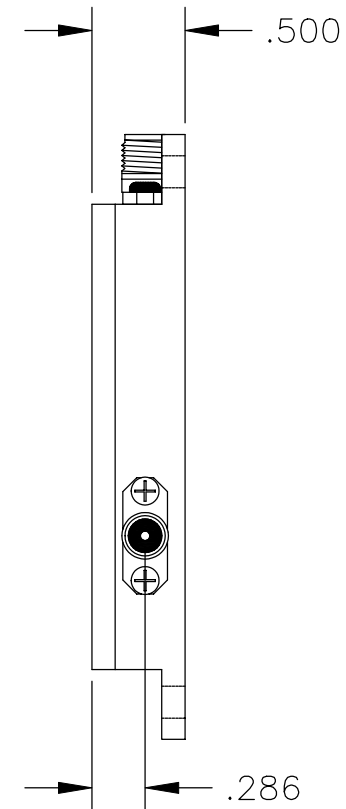
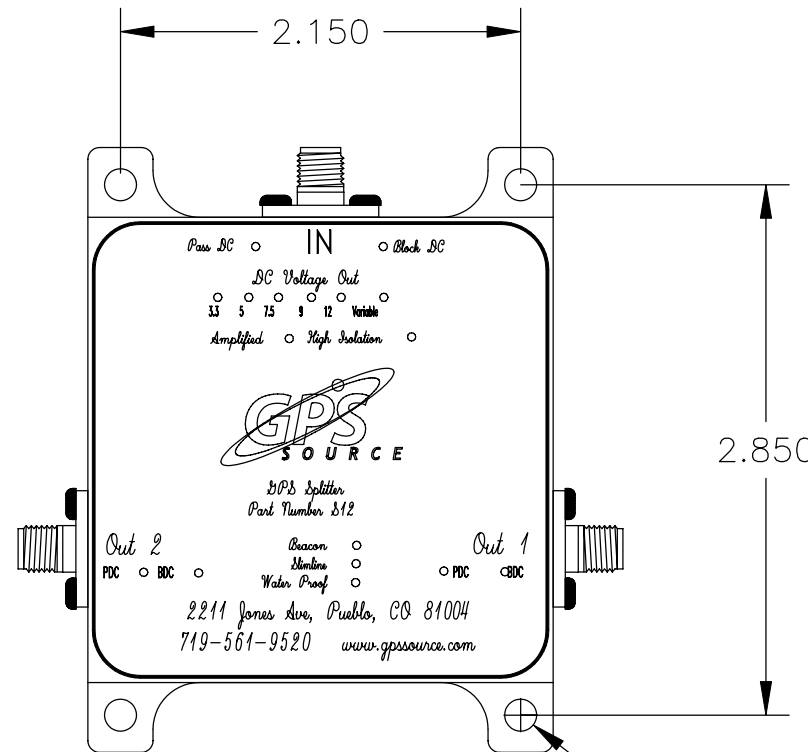
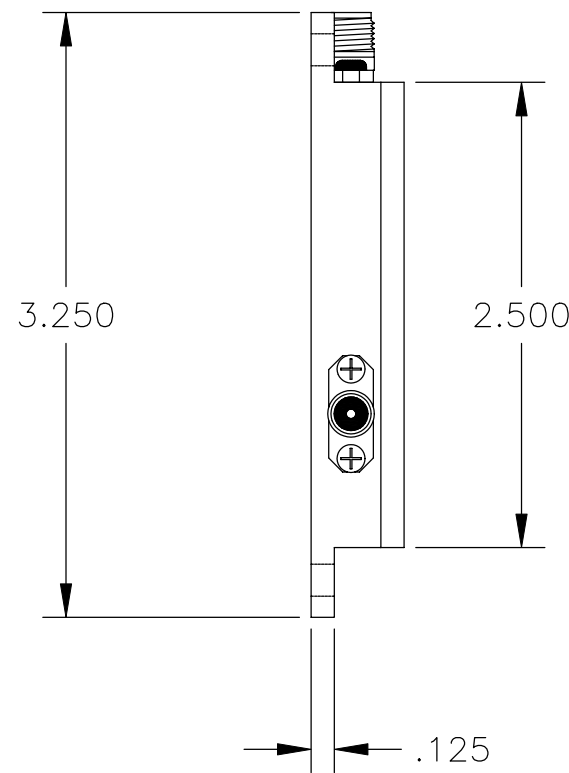
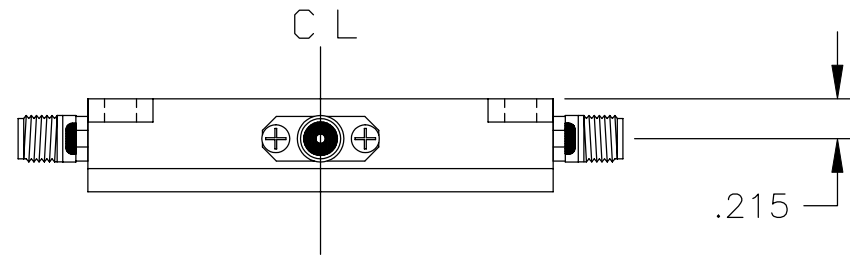


NOTES:

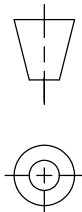
1. REMOVE ALL BURRS AND SHARP EDGES.
2. MATERIAL: 6061-T6 ALUMINUM
3. FINISH: ELECTROLESS NICKEL PLATED MIL-C-26074C, CLASS 1, .00028-.00032 MAX. THICKNESS.

REVISIONS				
REV	DESCRIPTION	ECO	BY	DATE
002		-		
003		-		
004		-		
005		-		
006		-		
007		-		
008		-		
009		-		



NEXT ASSEMBLY	USED ON
MATERIAL:	
FINISH:	

THIRD ANGLE PROJECTION



DIMENSIONS ARE IN INCHES.
 TOLERANCES:
 .XX = ± .01
 .XXX = ± .005
 .XXXX = ± .0005
 ANGULAR = ± 1°
 DIA CONCENTRIC WITHIN .005
 TOTAL INDICATOR RUNOUT.
 SURFACE 32 OR BETTER.
 DIMENSIONAL LIMITS APPLY TO FINISHED PART.

GPS Source			
DRAWN	P. COINER	17 FEB 05	TITLE
CHECKED			1X2 SLIM LINE ASSEMBLY SMA CONNECTORS
PROJ ENG			SIZE
APPD			DWG NO.
			1X2_SL_SSS_Assembly_001.dwg
			REV
			001
			SCALE: 1/1
			SHEET 1 OF 1